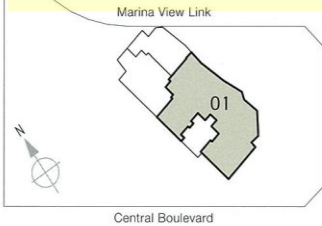


Penthouse



MARINA BAY SUITES
SINGAPORE

Type P3 (526 sq m / 5662 sq ft)
#64-01



Plans are not to scale and are subject to any amendment as may be approved by the relevant authorities. All floor areas are approximate and are subject to final survey. Wall thickness and column size may

Not Released For Sale. Plan Under Revision.

Penthouse

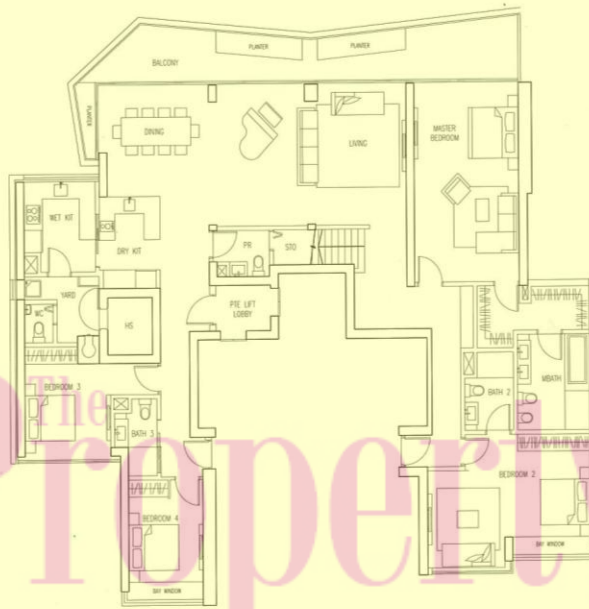


MARINA BAY SUITES
SINGAPORE

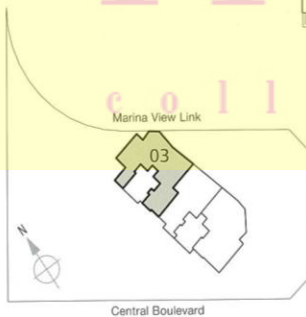
Type P2 (438 sq m / 4715 sq ft)
#63-03



(Upper Level)



(Lower Level)



Property collection.com

Not Released For Sale. Plan Under Revision.

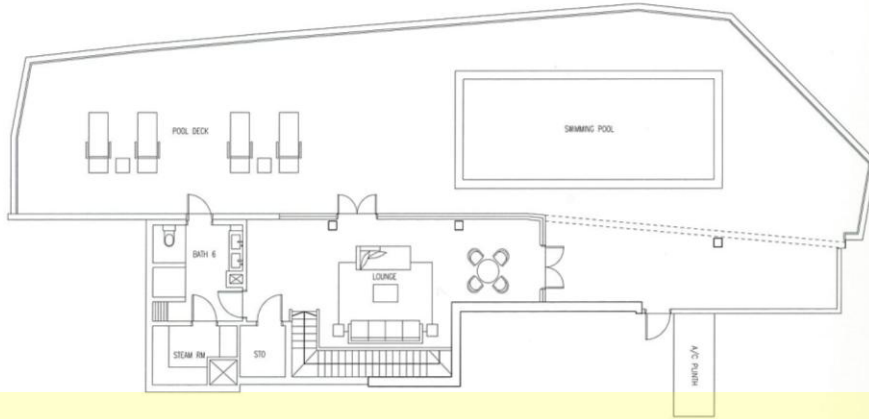
Plans are not to scale and are subject to any amendment as may be approved by the relevant authorities. All floor areas are approximate and are subject to final survey. Wall thickness and column size

Penthouse

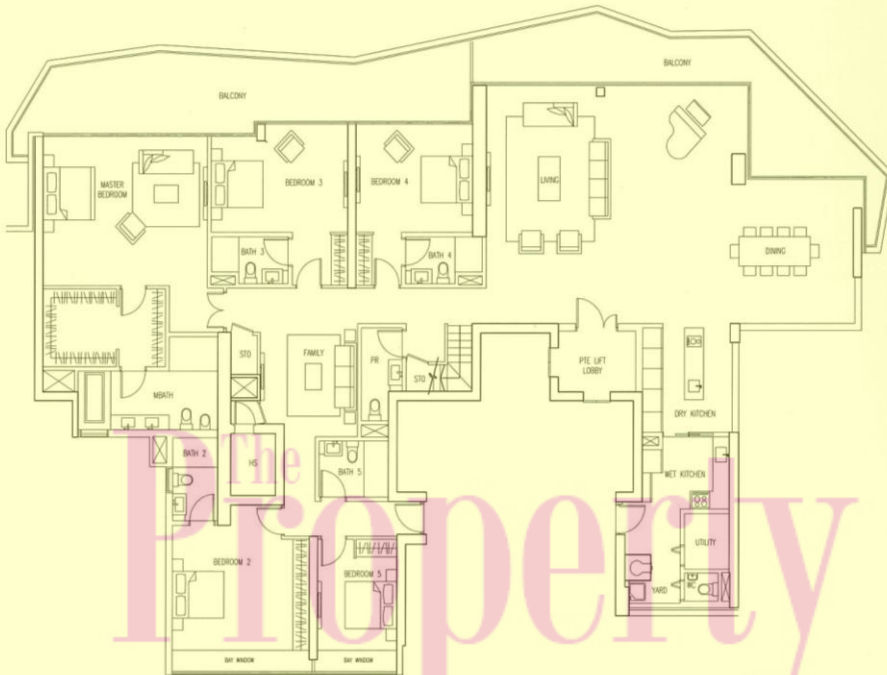


MARINA BAY SUITES
SINGAPORE

Type P1 (760 sq m / 8181 sq ft)
#65-01



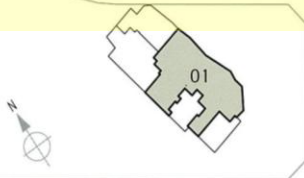
(Upper Level)



The Property collection.com

(Lower Level)

Marina View Link



Plans are not to scale and are subject to any amendment as may be approved by the relevant authorities. All floor areas are approximate and are subject to final survey. Wall thickness and column size ms

Not Released For Sale. Plan Under Revision.